

Eastern District Orchid Society Inc

Founded 1966

Patron

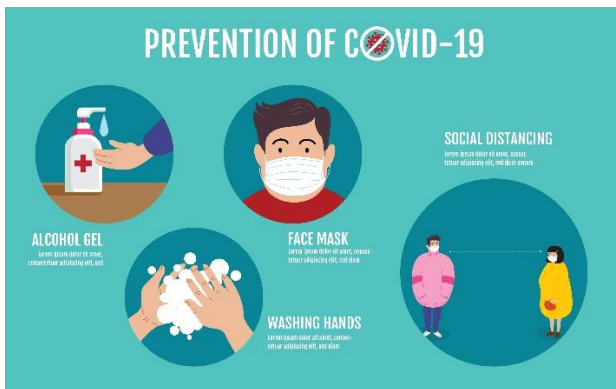
Joan Pease MP

President	Barry Kable	0414 725 294
Secretary	Milton Ludlow	0438 223 880
Treasurer	John Rooks	0449 131 309
Editor	Janelle Girdlestone	0407 351 922



PO Box 60 WYNNUM CENTRAL QLD 4178
www.edos.org.au

NEWSLETTER JULY 2020



Sorry, event cancelled

54th EDOS Inc Spring Show

The decision was made at the last EDOS Inc Management Committee Meeting to cancel the Spring Show, due to the uncertainty surrounding the Covid-19 situation. We do not want to put any of our members or the public at risk by holding the Show, and given the latest issues that have come to light in the last week, this decision is even more justified.

Change of Members' Details

In order to keep our EDOS Inc. records up to date, and to be able to keep in contact with our members, we would appreciate that, if you change any of your details, eg phone number, address, email address, you let us know of the changes. Show Captain Ray currently manages the Database, and can be contacted either by phone 07 3823 4277 or (preferably) email at taketwo@iprimus.com.au

Your information is very safe – we do not give out any information without your permission.

SOMETHING TO FILL IN THE GAPS

We will be continuing on with our Newsletter Photo Competition for next month, so please send in your photos

NEXT GENERAL MEETING

Following on from the Management Committee decision in March, EDOS Inc will not be holding a General Meeting until the situation surrounding the Covid-19 lockdown changes in such a way that it becomes safe to do so. As the Government re-assesses the restrictions, we will look at what we will be allowed to do safely.

Currently the Church management has closed the Hall, so until this changes we do not have a venue.

We want to keep everyone safe and protected from this virus, so we will be re-assessing the situation as the situation changes.

As we have been doing for the past few months, if there is any important information to be distributed to the members, it will be emailed out to everyone.

NEXT COMMITTEE MEETING

The Management Committee hasn't set a date for the next meeting. The Executive Committee are attending to any matters that require immediate attention. Because most things have shut down, there has not been much happening.

of your best flowering plants that are currently out in flower – just like taking them to the monthly meetings, only you don't need to go out – we would love to receive more photos. 2 of our AOC Judges will decide which photos they consider the best.

July Results:

First – *Ddc. javieri*, owned by Bill and Margaret Williams
Second – *Rlc. Sylvia Fry 'Bette'*, owned by Jim and Betty Stratford
Third – *Phal. Kingcar Honey Peach*, owned by Greg and Fiona Webb

The Rules are:

- The plant must be currently in flower
- The plant must be yours, and you must have owned the plant for 6 months.
- The photo needs to be clear and of good quality, since it could end up in the Newsletter.

The best plants will be selected, and printed in the Newsletter (seeing as we don't have photos from the meetings). This will allow everyone to share what they are currently flowering. Just email me a good quality photo of the flower, with its name, or if you don't have email, you can post a copy. I will endeavour to put as many photos into the Newsletter as I can.

Popular Vote

We would also like our members to have a "Popular Vote" from the photos attached to the Newsletter. Just email your choice (either plant name or just the number on the photo) to editor@edos.org.au, or phone 0407 351 922 if you can't email. We will announce the winner in the next month's Newsletter.

The popular vote for the June photos were:

First – Tie - No. 11 *Rlc. Burdekin Heights*, owned by Jim and Betty Stratford
and No 8 - *Ctt. Scarlet Imp 'Paradise'* owned by Jim and Betty Stratford

Keep up the good work members!!!

UPCOMING SHOWS

Due to the current Covid-19 situation, Shows have been cancelled until further notice. The recommencement of Orchid Shows will depend on the Government Rules and the Societies' ability to abide by them, the availability of venues, and the availability of members to run these Shows. There is also an issue with the availability of AOC Judges being available due to their own health issues.

HORTICULTURAL SOLUTIONS
ORCHID FOOD
WITH **ATTITUDE**
AND EXTREME ADDITIVES
◀ **DUETTA Plus B** ▶
Now available in 1 Litre Packs
MORE THAN JUST A FERTILISER
PO Box 213, Capalaba Qld 4157
Ph/Fax (07) 3206 0037 – Mobile 0419 710 634

EDOS INC. TRADE TABLE

If any of our members require goods from the EDOS Inc. Trade Table, please contact our Convenor Greg Webb on 0499 987 729. Greg will then be able to assist you with your purchases.

Fame Orchids Nursery
Peter's Glen Shade Houses
119 Boundary Road Thornlands Q 4164
Shade Houses & Orchid Specialists
Ph 3206 4385 Open 7 days
www.fameorchids.com
Est 1978

Thousands of Orchids and Growing Accessories
Orchid Bark, Charcoal, Sphagnum Moss, Perlite
Squat Pots, Trays, Timber Baskets, Wire Hangers
Cork Bark, Tree Fern Mounts, Hollow Logs
www.petersglenshadehouses.com.au
Huge range of Shade Houses, Open & Closed units
Plants Stands, Benches, Rolled Edge Shelving
Email sales@fameorchids.com

EDOS Inc Facebook page

Don't forget members, that EDOS Inc now has a Facebook page. Keep up with what is important to EDOS Inc members via the Facebook.

AOCC Conference 2021

Please see the attached document for the latest information on the AOCC Conference being hosted by South East Queensland Societies in September 2021.

If you are interested in sponsoring a Class please have a read of the attached document. There are plenty of options for anyone interested. EDOS Inc has chosen to support the Conference by sponsoring some of the Classes and Champions.

Remember, this is our Conference, so consider assisting wherever you can to make it a fantastic event.

Stay Safe everyone, and we will see you all in the near future.

ORCHIDACEOUS SUPPLIES

Suppliers of Orchid Accessories

For all your orchid accessories –

Kiwi orchid bark, RCRA Orchid char, Portugal cork, Perlite, Growing media, pots, clips, labels and lots more.

Australian Importer for Kiwi Orchid Bark

Grahame & Margaret Muller
PO Box 4192, Tinana, Qld 4650
Phone: 07 4122 1251
Mobile: 0408 076 511

Email: supplies@orchidaceoussupplies.com.au
www.orchidaceousbooks.com.au

NOTES FROM THE EDITOR

If anyone has any articles they would be interested in having included in the Newsletter please let me know. For anyone who is interested in receiving their Newsletter electronically, please let me know your email address and I will include you in our email group. My email address is editor@edos.org.au

GENERAL NOTICE

Members who wish to record change of address or other membership particulars – please advise the Secretary - email secretary@edos.org.au or phone 0438 223 880. **Disclaimer:** While the Management Committee and the Editor of the EDOS Inc Newsletter endeavour to assure the reliability of material and advertising printed in the Newsletter, neither EDOS Inc or the Editor can assume any responsibility for the views expressed in the Newsletter. Editors of other Newsletters are advised that EDOS Inc will be happy if they decide to use material printed herein.