

Eastern District Orchid Society Inc

Founded 1966

Patron

Joan Pease MP

President	Barry Kable	0414 725 294
Secretary	Garth Dale	0410 318 587
Treasurer	John Rooks	0449 131 309
Editor	Janelle Girdlestone	0407 351 922



PO Box 60 WYNNUM CENTRAL QLD 4178

www.edos.org.au

Visit us on Facebook

NEWSLETTER MARCH 2021



NEXT GENERAL MEETING

The next General Meeting will be held on **Thursday 25 March, 2021**, commencing at 8.00 pm, at the Bayside Uniting Church Hall, 420 Wondall Road, Manly West.

In order for the Committee to have everything in place for Covid requirements, we ask that members **DON'T** arrive before 7 pm unless you are coming to assist with setup. This is to allow the Committee to put out the Signs, Registers, Sanitisation Stations, etc so that members can sign in as soon as you arrive at the Hall.

As we are operating under the Uniting Church's Covid Plan, please be aware of some of the Instructions which will be enforced.

- Firstly, and most importantly, if you are not feeling well, or show any of the flu-like symptoms, please do not attend the meeting. If you do, you may be asked to leave and seek medical attention. Also, if you don't feel comfortable with attending, we accept your decision.
- Entry will be via the usual door, however to Exit the Hall you will need to use the double sliding door (Fire Exit Door). Both doors will be signed appropriately. Due to maintenance around the Hall there may be some changes on the meeting night. Please follow the signs.

- **Condition of Entry** - The Queensland Government have changed the Requirements for compulsory signing in at events, and **it is now necessary, where possible, to use the provided "QR" Code, so for those members who have a phone capable of doing this, please make sure that you have it with you.** This code will be inside on the table for use by those with suitable phones. For those members who do not have a suitable phone, there will be a paper Register to sign. **This form must be filled in legibly.** It will now also be back to our usual system of signing the regular Attendance Book as well. **We recommend that you bring your own pen, however, we will have sanitised pens available.**
- Please be conscious of the 1.5 metre distancing Rule, and ensure that it is observed.
- Hand Sanitising and Cleaning Wipes will be available at designated stations for members' use.
- There will be **no Red Spotters**, but the **Library and Trade Table will be available.**
- **Committee has increased the number of plants to be benched to 6 (six) plants.** To be fair to all members, please adhere to this number.
- Plants will be displayed along one side of the hall, with Committee members monitoring movement of member numbers during this time, in order to keep everyone safe. **When doing your Popular Vote, please be conscious of Social Distancing requirements.**
- The area being used for Supper will be announced on the night due to maintenance works. Tea/coffee

will be poured by kitchen volunteers who will also add the milk and sugar if required. Individually wrapped biscuits will be provided.

- If you need stock from the Trade Table, it will need to be pre-ordered. Greg can be contacted on 0499 987 729. The Trade Table will be inside the hall near the far-side doors (which lead out to the area usually used for Red Spotters).
- The correct money or use of EFTPOS would be appreciated for Raffle tickets.

Depending on the Government's relaxations, some of these Rules could change, depending on further information from the Church Committee.

GUEST SPEAKER

Janelle Girdlestone's topic will be Nomenclature (Nothing too Deep!) and the Correct Writing of Plant Labels and Benched Plant Labels. This will be particularly relevant with the Shows coming up.

The following members are requested to make themselves available for the next meeting:

Judges: AOC Judges available on the night
Student Judges: Greg Webb and one other
Scribes: Volunteers required please.
Supper Stewards: Kay Ludlow plus volunteers
Hostesses: Dot Rooks and Margaret Rieck
Library: Helen Vickers
Plant Registrar: Ann Kable
Trade Table: Greg Webb

NEXT COMMITTEE MEETING

The next Committee Meeting will be held at 9.30 am on **Thursday 1 April, 2021** at the Bayside Uniting Church Rooms, 420 Wondall Road, Manly West.

Memberships for 2021

EDOS Inc Committee have decided that, in light of the difficulties created during the 2020 year by the Covid-19 situation, membership fees paid in 2020 will be carried over to cover 2021.

Change of Members' Details

In order to keep our EDOS Inc. records up to date, and to be able to keep in contact with our members, we would appreciate that, if you change any of your details, eg phone number, address, email address, please let us

know of the changes. Please contact the Secretary at secretary@edos.org.au or phone Garth on 0410 318 587.

55th EDOS Inc AUTUMN SHOW

The Committee is moving ahead with plans for the 55th Autumn Show on 1 and 2 May, 2021.

In order to adhere to any Covid-19 Regulations which may still be in operation at that time, we have looked at some changes in the layout of the Show.

More information will be available in future Newsletters once we have worked out the best plan.

If there is any member who is interested in Sponsoring a Category at the Show, please let Show Captain, Ray know.

For those members who have not sold through EDOS Inc before, EDOS Inc makes payments for Plant Sales via EFT. Treasurer Rooks will have forms available at the next few meetings and at the Show for Members to fill out with Bank Details. These forms, once filled out, are to be handed back to either John Rooks, or Dot Rooks who is one of the Hostesses on the door at Meeting nights. Be assured that this information will remain confidential.

BAR CODE LABELS

Bar Coding Labels for the upcoming EDOS Inc Autumn Show **will need to be ordered early to avoid a last minute rush.**

It may not be possible to print labels on Friday night.

Remember, any labels that you had left over from previous Shows can be used again at the Autumn Show.

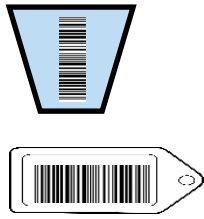
The Bar Code Label Request Form is on the Website, and for those who need them, they will also be available at the February meeting.

The contact details on the form are Important, so that Ray can contact the member if there is an issue, or to let the member know when they are ready for collection.

The most important information required is the number of labels required for each dollar value (whole dollars ONLY). Any labels you do not use can be used at any EDOS Inc show in the future.

To ensure that the Barcoding system works efficiently and quickly, we are requesting that ALL labels be put

vertically on the pot (as below), instead of horizontally, to enable the reader to work more efficiently.



The Barcode label needs to be put on the **back of the plant name tag or a separate tag on mounted plants.**

If there are any queries please contact Ray, either on 3823 4277 or email taketwo@iprimus.com.au

Remember, it is a requirement to have these barcode labels on your pots, as this is the only method our Plant Sales Staff will be using to process the sale of your plants.

In addition to the bar code labels, you can still put the "old style" information Tags on your plants with any other information you want eg species, colour etc.




DON'T FORGET – NO BAR CODE LABEL, NO PLANT SALES!

Plant Benching Labels - are available on the Website. They will also be available at the March and April Meetings.

Craft Sales Tags will be available at the March and April Meetings. If you have any queries about items to be sold through Craft Sales, please contact Convenor Narelle Edmonds.

Member Number – If you do not know what your Member Number is, it will be available from the Plant Registrar on the Friday night. This number needs to be used if you are benching, otherwise we can't identify the owner of the plant should it win.

 **Correct Names on Plant Labels** - For any members who are unsure of, or would like to confirm that their plant labels are correct before benching, (either spelling or registration of crosses) EDOS will have the Orchidwiz database available for members to check their labels on Friday night prior to benching of plants,. Please see Ann Kable or Janelle Girdlestone.

Show Attendance Register - - It is EDOS Inc. policy that ALL persons attending; exhibiting; benching or selling orchid plants at the Autumn Show sign the

EDOS Inc Attendance Register, so please make sure you sign when you arrive at the Hall. **This is in addition to the Covid Sign-in.**

Fire Ant Register – Department of Agriculture and Fisheries requires that Members **MUST** sign the Fire Ant Register before Plants can be accepted for either showing or Sales. This Register **MUST** be signed regardless of where you live. Care needs to be taken when transporting plants.

Please remember that Plants **SHOULD NOT** be placed on the ground or floor at the Venue.



Kitchen - Catering Convenor Margaret would appreciate assistance in the kitchen, especially early in the day for preparation.



Cut Flowers and Greenery – The

Ladies from the Floral Arrangement section of our show are requesting contributions of any orchid flowers, bromeliad flowers and Anthuriums, and also greenery for their floral arrangements, especially on Saturday, as these Floral Arrangements are very popular, and supplies usually run low by lunchtime.

The leaves from the cordylines, flax, anthurium, camellia bush, magnolia, strap leaves and crotons are great for greenery, along with all the others you kindly bring. We would also be very grateful for containers (small or large) suitable for flower arrangements.

Many thanks in advance to all who help us out. If in doubt please ask Brent Nicoll.

Other General Information

- Members of other societies who are benching plants for judging are permitted to offer plants for sale (2 good quality plants required to be benched to do so), subject to the normal conditions of sale and volume.
- **All plants are the owners' responsibility, and need to be collected after completion of the show. The Committee is not responsible for any plants not collected.**

Plant sales – Convenor Dick Dorham will require helpers in Plant Sales. Dick would also appreciate it if anyone can bring in small boxes.

If anyone is interested in operating the Cash Registers during the Show, please contact Plant

Sales Convenor, Dick at the next meeting, and he will organise some training.

Convenor Dick would also like to emphasise that fact that you must NOT alter the monetary value on the bar code label by writing on it. If you wish to change the value, or you don't have a label of the value you want to charge, please replace the label with the correct value. You cannot put 2 labels on your plant to be added together (for example, a \$20 and a \$10 label for a \$30 plant)

Condition of Sale Plants – Please ensure that any plants you may present for sale are virus free, clean and **NOT RECENTLY POTTED**. Plants need to be stable in the pots and not show any insect damage, etc.

It has been noted that some plants presented for Sale at recent EDOS Shows were below the standard and quality that this Society considers acceptable. If a plant is not of the standard that you yourself would purchase, then it should not be presented to Plant Sales. As per our By-Laws, -refer in particular to EDOS By-Laws 5.6 and 5.7 - such plants which are deemed to be of an unsuitable standard will be removed from the Sales Tables.

Sales at EDOS Inc Shows are limited to Orchids and Orchid related products. Any queries relating to Sales need to be directed to the Plant Sales Convenor, Dick

Assistance During The Show

If you are available to help out at the Autumn Show please put your name on the **Roster which will be at the next couple of meetings (Roster will be at the front table)**, or contact either Show Captain Ray, Secretary Garth or President Barry and let them know when and where you would be available to help out.

One area we urgently need volunteers to cover is scribing on Friday night during Judging. It is not an onerous job, the main part of the job is copying names off the plant labels of the plants that have been judged as winners, along with the correct Class, so that those in the office can print out the Place Cards. There will be someone there to assist you during the night. (Incidentally, you could always "practice" on Meeting nights during judging, just speak to Ken Haase before the meeting starts).

We particularly need volunteers for the Front Door, and Plant Minding, and to set up **on Friday afternoon from 3.00 pm, and especially for the clean up on Sunday afternoon.** Because of the Covid Rules, there will be a bit more cleaning to do than usual, so the more helpers we have the quicker it all gets done!

Under the current Covid climate, we understand that some members will be reluctant to attend a public event such as this, but if you are able to, please consider helping out. Even if you can only spare a couple of hours, we need as many members as possible to help make the show a success and give all of our workers a break and a chance to have a browse around the show! Remember, it is your Society.

ORCHIDACEOUS SUPPLIES

Suppliers of Orchid Accessories

For all your orchid accessories –

Kiwi orchid bark, RCRA Orchid char, Portugal cork, Perlite, Growing media, pots, clips, labels and lots more.

Australian Importer for Kiwi Orchid Bark

Grahame & Margaret Muller
PO Box 4192, Tinana, Qld 4650
Phone: 07 4122 1251
Mobile: 0408 076 511

Email: supplies@orchidaceoussupplies.com.au
www.orchidaceousbooks.com.au

EDOS INC. TRADE TABLE

If any of our members require goods from the EDOS Inc. Trade Table at any time – not just on a Meeting night - please contact our Convenor Greg Webb on 0499 987 729. Greg will then be able to assist you with your purchases and arrange collection or bring the items to a meeting.

Articles for the Newsletter

If anyone has an article of interest for our members on an orchid-related subject, please feel free to send it in to me for inclusion in the Newsletter. If the article is not appropriate for our Newsletter, it will not be printed, and the sender will be notified of the reason.

EDOS Inc Facebook page

Don't forget members, that EDOS Inc has a Facebook page. If you have something relevant to EDOS Inc to share with your fellow members, please feel free to post

it. Always remember though that if it is inappropriate, one of the Administrators will remove it

HORTICULTURAL SOLUTIONS

ORCHID FOOD

WITH **ATTITUDE**
AND EXTREME ADDITIVES

◀ **DUETT A Plus B** ▶

Now available in 1 Litre Packs

MORE THAN JUST A FERTILISER

PO Box 213, Capalaba Qld 4157

Ph/Fax (07) 3206 0037 – Mobile 0419 710 634



Fame Orchids Nursery
Peter's Glen Shade Houses
119 Boundary Road Thornlands Q 4164
Shade Houses & Orchid Specialists
Ph 3206 4385 Open 7 days
www.fameorchids.com
Est 1978

Thousands of Orchids and Growing Accessories
Orchid Bark, Charcoal, Sphagnum Moss, Perlite
Squat Pots, Trays, Timber Baskets, Wire Hangers
Cork Bark, Tree Fern Mounts, Hollow Logs
www.petersglenshadehouses.com.au
Huge range of Shade Houses, Open & Closed units
Plants Stands, Benches, Rolled Edge Shelving
Email sales@fameorchids.com

Shows for 2021



What: Ipswich Autumn Show
Where: Silkstone State School, Prospect St, Silkstone
When: 10 and 11 April, 2021

What: Queensland Orchid Society Inc
Where: BISC Building, Belmont Shooting Complex,
1485 Old Cleveland Road, Belmont
When: 17 and 18 April, 2021

What: Redlands Orchid Society Inc
Where: **New Venue** - Redlands Multi Sports Club,
Judy Holt Park Complex, entry via roundabout
corner Bailey and Randall Roads Birkdale
When: 24 April, 2021

What: EDOS Inc Autumn Show
Where: BISC Building, Belmont Shooting
Complex, 1485 Old Cleveland Road,
Belmont
When: 1 and 2 May 2021

What: Lockyer Autumn Show
Where: Gatton
When: 7 and 8 May, 2021

What: Aspley Orchid Society May Show
Where: Community Hall, Edinburgh Castle Rd,
Wavell Heights
When: 8 May, 2021

What: Toowoomba Autumn Show
Where: Church Hall, Cnr James and Phillip Sts,
Toowoomba
When: 8 and 9 May, 2021

What: Brisbane Orchid Society
Where: BISC Building, Belmont Shooting Complex,
1485 Old Cleveland Road, Belmont
When: 22 and 23 May, 2021

What: Toowoomba Winter Show
Where: Church Hall, Cnr James and Phillip Sts,
Toowoomba
When: 17 and 18 July, 2021

What: John Oxley Autumn Show
Where: Auditorium, Mt Coot-tha
When: 24 and 25 July, 2021

AOCC Conference 2022

Due to Covid Restrictions the 22nd Australian Orchid Council Conference & Show has been postponed to 31 August to 4 September 2022.

For the latest information click on the link - <https://www.aocc2021.org>

More Information from Last Month's Presentation on Latouria Dendrobiums

Following on from John Rees' presentation at last Month's General Meeting, John has provided the following information to assist members in understanding Latouria Dendrobium requirements

JON CARA'S CLASSIFICATION OF LATOURIA DENDROBIUMS BY TEMPERATURE CONDITIONS

Cool Grow 15–20°C

Dendrobium acutisepalum
Dendrobium amphigenyum
Dendrobium cruttwellii
Dendrobium geotropum
Dendrobium guttatum
Dendrobium kauldorumii
Dendrobium magnificum
Dendrobium mayandyi
Dendrobium rhomboglossum
Dendrobium rigidifolium
Dendrobium sarcopodioides
Dendrobium simplex
Dendrobium engae

Intermediate Grow 21–27°C

Dendrobium aberrans
Dendrobium alexandrae
Dendrobium atrovioleaceum
Dendrobium biloculare
Dendrobium convolutum
Dendrobium crasilobium
Dendrobium dendrocolloides
Den, macrophyllum Complex
Dendrobium euryanthum
Dendrobium eximium
Dendrobium finisterrae
Dendrobium forbesii
Dendrobium hodgkinsonii
Dendrobium otaguroanum
Dendrobium polysema Complex
Dendrobium punamense
Dendrobium rhodostictum
Dendrobium rugiosum
Dendrobium sikinii
Dendrobium tapiniense
Dendrobium uncipes
Dendrobium woodsii

Warm Grow 28–32°C

Dendrobium bifalce
Dendrobium gordonii
Dendrobium johnsoniae
Den, macrophyllum Complex
Dendrobium normandyense
Dendrobium psyche
Dendrobium shiraishii
Dendrobium spectabile

NOTES FROM THE EDITOR

For anyone who is interested in receiving their Newsletter electronically, please let me know your email address and I will include you in our email group. My email address is editor@edos.org.au

GENERAL NOTICE

Members who wish to record change of address or other membership particulars – please advise the Secretary - email secretary@edos.org.au or phone 0410318587. **Disclaimer:** While the Management Committee and the Editor of the EDOS Inc Newsletter endeavour to assure the reliability of material and advertising printed in the Newsletter, neither EDOS Inc or the Editor can assume any responsibility for the views expressed in the Newsletter. Editors of other Newsletters are advised that EDOS Inc will be happy if they decide to use material printed herein.