

Eastern District Orchid Society Inc

Founded 1966

Patron

Joan Pease MP

President	Barry Kable	0414 725 294
Secretary	Garth Dale	0410 318 587
Treasurer	John Rooks	0449 131 309
Editor	Janelle Girdlestone	0407 351 922



PO Box 60 WYNNUM CENTRAL QLD 4178
www.edos.org.au
Visit us on Facebook

This Newsletter kindly photocopied in the office of Joan Pease MP

NEWSLETTER MARCH 2022

NEXT GENERAL MEETING

The next General Meeting will be held on **Thursday 24 March, 2022**, commencing at 8.00 pm, at the Bayside Uniting Church Hall, 420 Wondall Road, Manly West.

In order to comply with Social Distancing Rules, we ask that members **DON'T** arrive before 7 pm unless you are coming to assist with setup.

NEXT COMMITTEE MEETING

The next Committee meeting will be held on 7 April, 2022 in the Meeting Rooms at the Bayside Uniting Church, 420 Wondall Road, Manly West, commencing at 9.30 am.

RED SPOTTER PRESENTATION

Commencing at 7.30 pm on the side verandah of the Hall, Dick Dorham will be doing a presentation on Preparing Your Plants for Sale. As the set-up for the Show is the next day, this is a very topical subject, especially for our new growers who may be selling plants at the EDOS Show.

FEATURE ITEM

The March meeting's Feature item will be a presentation by Richard from Kingfisher Orchids, who will be talking about Queensland Native Orchids. Kingfisher Orchids Nursery is fairly new, and is just outside Ipswich. They were at the QIOF Fair recently.



The following members are requested to make themselves available for the next meeting:

Judges: Brent Nicoll, Ray Girdlestone, Eric Locke, Janelle Girdlestone + one other
Associate Judges: Hazel Barker and Greg Webb
Scribes: Volunteers required please.
Supper Stewards: Kay Ludlow plus volunteers
Hostesses: Dot Rooks and Margaret Rieck
Library: Helen Vickers
Plant Registrar: Ann Kable

MEMBERSHIP RENEWAL

Members are reminded that Annual Subscriptions were due on 1 January, 2022.

Please take note that any members who have not paid their Subscriptions when the March Newsletter is due will not receive their copy, as they will be deemed to be unfinancial at the end of February (as per our Constitution).

Please also remember that you need to be a financial member to be able to table plants or have plants in Plant Sales at the upcoming Autumn Show.

Show Dates for 2022 (to be confirmed)

Please check with the relevant Society prior to the event to confirm whether the Show is going ahead. Editor will endeavour to notify our members of any cancellations when received.

EDOS Inc Autumn Show

When: 26 and 27 March, 2022
Where: BISC Complex, 1485 Old Cleveland Road, Belmont

Combined Orchid Spectacular ANOS Kabi Group and North Moreton Autumn Show

When: 9 and 10 April, 2022
Where: Genesis Christian College, 12-16 Youngs Crossing Road, Bray Park

Ipswich Orchid Society

When: 9 and 10 April, 2022
Where: Silkstone State Primary School, Prospect St, Silkstone

Redlands Orchid Society

When: 23 April, 2022
Where: Redlands Multi Sports Club, Judy Holt Park Complex, Bailey and Randall Roads Birkdale

Brisbane Orchid Society

When: 7 and 8 May, 2022
Where: BISC Complex, 1485 Old Cleveland Road, Belmont

Lockyer Valley Orchid Society

When: 13 and 14 May, 2022
Where: Cnr Spencer and Railway Sts, Gatton

Aspley Orchid Society Mothers Day Show

When: 14 May, 2022
Where: Community Hall, Edinburgh Castle Rd, Wavell Heights

Southport & Districts Orchid Society Autumn Show

When: 21 May, 2022
Where: Paradise Parklands, Nerang

Queensland Orchid Society

When: 28 and 29 May, 2022
Where: BISC Complex, 1485 Old Cleveland Road, Belmont

Brisbane Orchid Supplies *For all your Orchid Accessory Needs*

Pots, Orchid Mixes, Labels, Clips, Hangers, Fertilisers and lots more.

Suppliers of Orchiata Orchid Bark

Contact

Paul and Leanne McCarthy

Phone 0435 959 297

Email: sales@brisbaneorchidsupplies.com

Flood Damage

To any of our EDOS Inc Members and also any other Orchid Society Growers who may have been impacted by the recent floods, we hope that you will be able to recover from any damage incurred, and get back on track soon.

56th EDOS Inc AUTUMN SHOW

Well, the 56th Autumn Show on 26 and 27 March, 2022 is almost here.

The Show Schedule was attached to the last Newsletter.

For those members who have not sold through EDOS Inc before, EDOS Inc makes payments for Plant Sales via EFT. Treasurer Rooks will have forms available at the next meeting and at the Show for Members to fill out with Bank Details. These forms, once filled out, are to be handed back to either John Rooks, or Dot Rooks who is one of the Hostesses on the door at Meeting nights. Be assured that this information will remain confidential.

PLEASE NOTE: Set-up of the venue will be at 2 pm, however Plants will NOT be allowed on the Show Benches until 4 pm. or when the Show Steward is satisfied everything is ready, closing

off at 7 pm for Judging. There will be tables provided to put plants on in the meantime.

BAR CODE LABELS

Time is running out to order your Bar Coding Labels for the upcoming EDOS Inc Autumn Show, if you need labels you have **until Thursday 24th March to order. Labels need to be ordered early to avoid a last minute rush.**

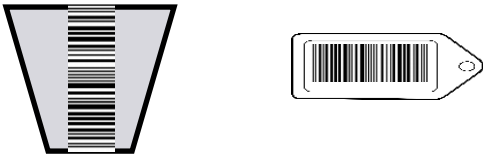
It may not be possible to print labels on Friday night.

The Bar Code Label Request Form is on the Website, and for those who need them, they will also be available at the March meeting.

The contact details on the form are Important, so that Ray can contact the member if there is an issue, or to let the member know when they are ready for collection.

The most important information required is the number of labels required for each dollar value (whole dollars ONLY). **Any labels you do not use can be used at any EDOS Inc show in the future.**

To ensure that the Barcoding system works efficiently and quickly, we are requesting that ALL labels be put vertically on the pot (as below), instead of horizontally, to enable the reader to work more efficiently.



The Barcode label needs to be put on the **back of the plant name tag on mounted plants.**

If there are any queries please contact Ray, either on 3823 4277 or email taketwo@iprimus.com.au

Remember, it is a requirement to have these barcode labels on your pots, as this is the only method our Plant Sales Staff will be using to process the sale of your plants.

In addition to the bar code labels, you can still put the "old style" information Tags on your plants with any other information you want eg species, colour etc.



DON'T FORGET – NO BAR CODE LABEL, NO PLANT SALES!

Plant Benching Labels - are available on the Website. They will also be available at the March Meeting.

Craft Sales Tags will be available at the March Meeting. If you have any queries about items to be sold through Craft Sales, please contact Convenor Narelle Edmonds.

Member Number – If you do not know what your Member Number is, it will be available from the Plant Registrar on the Friday night. This number needs to be used if you are benching, otherwise we can't identify the owner of the plant should it win.



Names on Plant Labels - For any members who are unsure of, or would like to confirm that their plant labels are correct before benching, (either spelling or registration of crosses) EDOS will have the Orchidwiz database available for members to check their labels on Friday night prior to benching of plants. Please see Ann Kable or Janelle Girdlestone. The database is also available at our General Meetings.

Show Attendance Register – It is EDOS Inc. policy that ALL persons attending, exhibiting, benching or selling orchid plants at the Autumn Show sign the EDOS Inc Attendance Register, so please make sure you sign when you arrive at the Hall.

NEW!!! Committee has decided that everyone who signs the Attendance Register will be allocated a number each day - if you attend all three days you have 3 chances - and at the end of the Show a draw will be done for vouchers for \$50 First, \$30 for Second, and \$20 for Third. In order to make the draw fairer, each member will only be eligible for one prize, so if your number comes out in the draw, you will be ineligible for any further prizes.

Fire Ant Register – Department of Agriculture and Fisheries requires that Members MUST sign the Fire Ant Register before Plants can be accepted for either showing or Sales. This Register MUST be signed regardless of where you live. Care needs to be taken when transporting plants.

Please remember that Plants SHOULD NOT be placed on the ground or floor at the Venue.



Cut Flowers and Greenery – The Ladies from the Floral Arrangement section of our show are requesting contributions of any orchid flowers, bromeliad flowers and Anthuriums, and also greenery for their floral arrangements, especially on

Saturday, as these Floral Arrangements are very popular, and supplies usually run low by lunchtime.

The leaves from the cordylines, flax, anthurium, camellia bush, magnolia, strap leaves and crotons are great for greenery, along with all the others you kindly bring. We would also be very grateful for containers (small or large) suitable for flower arrangements.

Many thanks in advance to all who help us out. If in doubt please ask Brent Nicoll.



Refreshments – although we will have on-site Food Suppliers for the public, EDOS workers will still be provided with morning/afternoon teas and lunch by our Show Kitchen Convenor Margaret.

Plant sales – Convenor Dick Dorham will require helpers in Plant Sales. Dick would also appreciate it if anyone can bring in small boxes.

If anyone is interested in operating the Cash Registers during the Show, please contact Plant Sales Convenor, Dick at the next meeting, and he will organise some training.

Convenor Dick would also like to emphasise that fact that you must NOT alter the monetary value on the bar code label by writing on it. If you wish to change the value, or you don't have a label of the value you want to charge, please replace the label with the correct value. You cannot put 2 labels on your plant to be added together (for example, a \$20 and a \$10 label for a \$30 plant)

Condition of Sale Plants – Please ensure that any plants you may present for sale are virus free, clean and **NOT RECENTLY POTTED**. ***Plants need to be stable in the pots and not show any insect damage, etc.***

It has been noted that some plants presented for Sale at recent EDOS Shows were below the standard and quality that this Society considers acceptable. If a plant is not of the standard that you yourself would purchase, then it should not be presented to Plant Sales. It is embarrassing when members of the public bring these plants to our attention.

As per our By-Laws, -refer in particular to EDOS By-Laws 5.6 and 5.7 - such plants which are deemed to be of an unsuitable standard will be removed from the Sales Tables.

Sales at EDOS Inc Shows are limited to Orchids and Orchid related products. Any queries relating to Sales need to be directed to the Plant Sales Convenor, Dick

Assistance During The Show

If you are available to help out at the Autumn Show please put your name on **the Roster which will be at the next meeting (Roster will be at the front table)**, or contact either Show Captain Ray, Secretary Garth or President Barry and let them know when and where you would be available to help out.

Even if you can only spare a couple of hours, we need as many members as possible to help make the show a success and give all of our workers a break and a chance to have a browse around the show! Remember, it is your Society.

One area we urgently need volunteers to cover is scribing on Friday night during Judging. It is not an onerous job, the main part of the job is copying names off the plant labels of the plants that have been judged as winners, along with the correct Class, so that those in the office can print out the Place Cards. There will be someone there to assist you during the night. (Incidentally, you could always “practice” on Meeting nights during judging).

We particularly need volunteers in Plant Sales to assist members of the public, and to keep an eye out to make sure everything is going okay. We also need some assistance at the Front Door for Entry and Raffle Sales. Plant Minding is another busy area, especially on Saturday.

If we have a good attendance for Set up on Friday afternoon from 2.00 pm, and especially for the clean up on Sunday afternoon, it makes it easier for everyone, and “spreads the load”, so the more helpers we have the quicker it all gets done!

Plants remaining after completion of the show are the responsibility of the owner. All care is taken to limit any discrepancies but prompt collection is advised on completion of the presentations.

Cultural Award February

(and also Plant of the Month – photos on “On the Benches”)

Dendrobium bracteosum “Gayle Maree”

This epiphyte is from the lowlands of New Guinea and islands to the east. The large floral bracts are a distinctive feature for which *D. bracteosum* is named. It has erect or pendulous terete to spindle shaped slender green to yellow-green stems approx. 50cm long. The blooms are variable in colour lasting for up to 6 months. The species requires bright light and regular watering but will tolerate dry spells.

Under our conditions *Den. bracteosum* is grown under 70% shade cloth where it is hung high receiving strong air movement. It is grown in bark and perlite and is fertilised once a week at half strength with organic or inorganic fertiliser. Regular watering is needed depending on weather conditions so the roots don't totally dry out. Reduce watering during the winter months.

Bill and Margaret Williams

QIOF Fair

Did everyone go out to the QIOF Fair to have a look recently? Even though the weather was "a total wipeout" the event itself went off very well. I think that anyone who attended would have been happy with their purchases. It was unfortunate that some vendors couldn't make it due to Covid and also the weather, however after a 2 year hiatus it was great to see it go ahead again.

Some of the vendors had a little bit of "a holiday" after the event due to flooding around Gympie, however after a couple of days they were all able to get home safely.

Let's look forward to next year!!



Fame Orchids Nursery
Peter's Glen Shade Houses
119 Boundary Road Thornlands Q 4164
Shade Houses & Orchid Specialists
Ph 3206 4385 Open 7 days
www.fameorchids.com
Est 1978

Thousands of Orchids and Growing Accessories
Orchid Bark, Charcoal, Sphagnum Moss, Perlite
Squat Pots, Trays, Timber Baskets, Wire Hangers
Cork Bark, Tree Fern Mounts, Hollow Logs
www.petersglenshadehouses.com.au
Huge range of Shade Houses, Open & Closed units
Plants Stands, Benches, Rolled Edge Shelving
Email sales@fameorchids.com

A man is expanding his orchid collection too fast when he flowers a new orchid but can't yet pronounce its name.

NOTE FROM THE EDITOR

For anyone who is interested in receiving their Newsletter and any other information from EDOS electronically, please let me know your email address and I will include you in our email group. You will receive your Newsletter in a much faster timeframe, and not miss out on anything else that is often sent out in between Newsletters. My email address is editor@edos.org.au

GENERAL NOTICE

Members who wish to record change of address or other membership particulars – please advise the Secretary - email secretary@edos.org.au or phone 0410318587. **Disclaimer:** While the Management Committee and the Editor of the EDOS Inc Newsletter endeavour to assure the reliability of material and advertising printed in the Newsletter, neither EDOS Inc or the Editor can assume any responsibility for the views expressed in the Newsletter. Editors of other Newsletters are advised that EDOS Inc will be happy if they decide to use material printed herein, on condition of acknowledgement of where the information was obtained.