

# Eastern District Orchid Society Inc

Founded 1966



Patron	Joan Pease MP	
President	Barry Kable	0414 725 294
Secretary	Garth Dale	0410 318 587
Treasurer	John Rooks	0449 131 309
Editor	Janelle Girdlestone	0407 351 922



PO Box 60 WYNNUM CENTRAL QLD 4178  
[www.edos.org.au](http://www.edos.org.au)  
Visit us on Facebook

## NEWSLETTER FEBRUARY 2026

### **NEXT GENERAL MEETING**

The next General Meeting will be held on **Thursday 26 February, 2026** commencing at 8.00 pm, at the Bayside Uniting Church Hall, 420 Wondall Road, Manly West.

In order to give our Hostesses and volunteers time to set up the tables, organise Sign-in Registers and Plant registration, we ask that members **DON'T ARRIVE BEFORE 7 PM UNLESS YOU ARE COMING TO ASSIST WITH SETUP**, otherwise it gets very congested around the front door. Please be mindful of members who are trying to get their plants inside, and leave a clear path.

### **RED SPOTTER PRESENTATION**

Red Spotters for February will be presented by Malcolm Hay. Malcolm will be discussing 'Beautiful Bulbophyllums'.

### **FEATURE ITEM**

Denise Hoy will be doing a very interesting talk on Habenarias. These orchids are becoming more widely grown nowadays, so this will be great for a lot of our members.

### **NEXT COMMITTEE MEETING**

The next Committee meeting will be held at 10.00 am on **Thursday 5 March, 2026** at Wynnum Manly Leagues Club.

### *Member Roster January 2026*

The following members are requested to make themselves available for the next meeting:

**Judges:** G Webb, R Harrison, J Rooks, E Locke  
**Associate Judges:** T Nguyen, P Horgan, Jason  
**Scribes:** Volunteers required please.  
**Supper Stewards:** Kay Ludlow and Malcolm Hay  
**Hostesses:** Dot Rooks and Margaret Rieck  
**Library:** Helen Vickers  
**Plant Registrar:** Ann Kable

## **Membership Renewal 2026**

**Members are reminded that Annual Subscriptions are due on 1 January, 2026 – both Family and Single \$15.**

Payment can be made either by:

- Payment at the January General Meeting, cash or EFT;
- Or by Direct Transfer to the following;

**Bank:** Bendigo Bank  
**BSB:** 633 000  
**Account No.** 163067937 (please include your name in reference, otherwise it cannot be identified as yours)

Please also note that any members who have not paid their Subscriptions when the March Newsletter is due will not receive their copy, as they will be deemed to be unfinancial at the end of February (as per our Constitution).

Please also remember that you need to be a financial member to be able to table plants or have plants in Plant Sales at the upcoming Autumn Show.

## Show Dates for 2026 (some TBC)

**What:** **Queensland Orchid Society Inc Autumn Show**

**When:** 7 and 8 March, 2026

**Where:** BISC Complex, 1485 Old Cleveland Rd, Belmont

**What:** **Eastern District Orchid Society Inc Autumn Show**

**When:** 21 and 22 March, 2026

**Where:** BISC Complex, 1485 Old Cleveland Rd, Belmont

**What:** **West Brisbane Orchid Society Inc**

**When:** 28 and 29 March, 2026

**Where:** Auditorium, Mt Coot-tha

**What:** **Ipswich Orchid Show**

**When:** 11 and 12 April, 2026

**Where:** Silkstone State School Hall, Prospect St, Silkstone, Ipswich

**What:** **ANOS Kabi Den. bigibbum Show**

**When:** 11 April, 2026

**Where:** Newman Room, Geebung RSL, 323 Newman Road, Geebung

**What:** **Brisbane Orchid Society Inc**

**When:** 2 May, 2026

**Where:** BISC Complex, 1485 Old Cleveland Rd, Belmont

**What:** **Lockyer Valley Orchid Society**

**When:** 8 and 9 May, 2026

**Where:** Anglican Church Hall, Cnr Railway & Spencer Sts, Gatton

**What:** **Redlands Orchid Society Inc**

**When:** 16 May, 2026

**Where:** Birkdale Sports Club, Judy Holt Park, Randall & Bailey Roads, Birkdale

**What:** **Toowoomba Autumn Show**

**When:** 16 and 17 May, 2026

**Where:** St. Pauls Church Hall, Cnr Phillip and James St Toowoomba

**What:** **North Moreton Orchid Society Inc**

**When:** 20 June, 2026

**Where:** Pine Rivers Showgrounds, 757 Gympie Rd, Lawnton

**What:** **John Oxley District OS Winter Show**

**When:** 25 and 26 July, 2026

**Where:** Auditorium, Mt Coot-tha

**Rolin Orchids**



**Robert & Linda Trost**

Contact us by email: [rolinorchids@gmail.com](mailto:rolinorchids@gmail.com)  
Or Facebook Messenger: [Rolin Orchids](#)

[www.rolinorchids.com](http://www.rolinorchids.com)

## EDOS INC 60TH AUTUMN SHOW

It is hard to believe but it is only 3 weeks – yes, 3 weeks!!! to our next Show!!!! The 60<sup>th</sup> Autumn Show will be held on 21 and 22 March, 2026.

The Show Schedule was attached to the January Newsletter, hopefully members have started planning and organising the plants they may want to bench or sell.

Please take the time to review the Show Schedule as there have been some changes made.

**Bank Details:** For those members who have not sold through EDOS Inc before, **EDOS Inc makes payments for Plant Sales via EFT ONLY.** Treasurer Rooks will have forms available at the next few meetings and at the Show for Members to fill out with Bank Details. These forms, once filled out, are to be handed back to either John Rooks, or one of the Hostesses on the door at Meeting nights. Be assured that this information will remain confidential.

# Plant Preparation for Show

You should have started preparing your plants for both benching and selling. Show bench plants with long spikes need to be “trained” as soon as the buds start to appear, to make sure they grow in the desired formation (dendrobium and phalaenopsis in particular). Genera like Cattleya, which can have a cluster with three or four individual flowers, may need some assistance to make sure the flowers are arranged to their best advantage. This can be done by – very gently - putting something soft like a piece of foam between the stem of the individual flowers as the sheath starts to open, to discourage them from “bunching” up. Orchids that are not presented well will not get the attention of the judges.

If necessary, be prepared to stake and tie your “unwieldy” plants, for both the sales table and the Show bench. Make sure that they are firm in their pots – not recently potted -, and not likely to fall over and damage someone else’s plants. It becomes awkward if stewards and officials have to remove plants because they are either diseased or not potted properly (and it happens almost every show).

If you have any plants that have had a name change recently, please make sure that the labels are correct. If you are aware that a plant has been renamed PLEASE CORRECT your label.

If you are not sure of the name on a plant, please talk to someone – our Committee members are there to assist, as are our Cultural Advisers. We also have Orchidwiz available at every General Meeting to allow for checking of nomenclature.

## BAR CODE LABELS

*Bar Coding Labels for the upcoming EDOS Inc Autumn Show will need to be ordered early to avoid a last minute rush.*

*It may not be possible to print labels on Friday night.*

The Bar Code Label Request Form is on the Website, and for those who need them, they will also be available at the February meeting.

The contact details on the form are Important, so that Ray can contact the member if there is an issue, or to let the member know when they are ready for collection.

The most important information required is the number of labels required for each dollar value (whole dollars ONLY). **Any labels you do not use can be used at any EDOS Inc show in the future.**

If there are any queries please contact Ray, either on 3823 4277 or email [taketwo@iprimus.com.au](mailto:taketwo@iprimus.com.au)

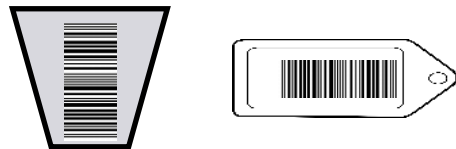
Remember, it is a requirement to have these barcode labels on your pots, as this is the only method our Plant Sales Staff will be using to process the sale of your plants.

In addition to the bar code labels, you can still put the “old style” information Tags on your plants with any other information you want eg species, colour etc.



– **NO BAR CODE LABEL, NO PLANT SALES!**

To ensure that the Barcoding system works efficiently and quickly, we are requesting that ALL labels be put vertically on the pot (as below), instead of horizontally, to enable the reader to work more efficiently.



The Barcode label needs to be put on the **back of the plant name tag on mounted plants, or on a separate label attached to the plant.**

If there are any queries please contact Ray, either on 3823 4277 or email [taketwo@iprimus.com.au](mailto:taketwo@iprimus.com.au)

**Plant Benching Labels** - are available on the Website. They will also be available at the January and February Meetings.

We would also like to see members who are benching plants use the label holders for their labels, rather than taping them to the pots. It is much easier for the scribes and the public to read the tag if it is above the plant. It also eliminates the possibility of having the public pulling out labels or moving the pots to read the name of the plant, reducing the possibility of plants being damaged -Oh yes it happens regularly, and then not put back in the correct pot!!!!.

**Craft Sales Tags** will be available at the February Meeting. If you have any queries about items to be sold through Craft Sales, please contact Convenor Narelle Edmonds.

**Member Number** – If you do not know what your Member Number is, it will be available from the Plant Registrar on the Friday night. This number needs to be used if you are benching, otherwise we can’t identify the owner of the plant should it win.



## **Names on Plant Labels**

- For any members who are unsure of, or would like to confirm that their plant labels are correct before benching, (either spelling or registration of crosses) EDOS will have the Orchidwiz database available for members to check their labels on Friday night prior to benching of plants. Please see Ann Kable or Janelle Girdlestone. The database is also available at our General Meetings.

IF YOU HAVE BEEN NOTIFIED OF A NAME CHANGE ON ANY PLANT, **PLEASE CHANGE YOUR LABEL.** Please make sure that your labels are clean and easy to read, so that the scribes can get the names correct when your plant wins a place. **Printed and not running writing or capitals is the correct way to write your labels.**

If you do not have clear printing, think about getting yourself a label printer – they are very easy to use and solves the problem of unclear labels. Brother have a really good one, a lot of us use it.

**Show Attendance Register** – It is EDOS Inc. policy that ALL persons attending, exhibiting, benching or selling orchid plants at the Autumn Show MUST sign the EDOS Inc Attendance Register, so please make sure you sign when you arrive at the venue. There will be a Lucky Draw done at the conclusion of the Show for those who have signed the book and assisted in the running of the Show.

**Fire Ant and Benching and Selling Register** – Department of Agriculture and Fisheries requires that Members MUST sign the Fire Ant Register before Plants can be accepted for either showing or Sales. **This Register MUST be signed regardless of where you live. Recently, some Societies have been visited by DAF to check on their registers, so EDOS would like to continue to be compliant.**

Signing these registers enables the Committee to identify anyone who may not have tags etc on their plants. **It is also a requirement if you are NOT an EDOS Inc member to make sure that you obtain an Exhibitors number from Ann Kable (or whoever is sitting at the table), otherwise you will not be in the database, and therefore we will not be able to record any places you may obtain on the Show Bench.**



**Cut Flowers and Greenery** – The “artists” from the Floral Arrangement section of our show are requesting contributions of any orchid flowers, bromeliad flowers and Anthuriums, and also greenery for their floral arrangements, especially on Saturday, as these Floral Arrangements are very popular, and supplies usually run low by lunchtime.

The leaves from the cordylines, flax, anthurium, camellia bush, magnolia, strap leaves and crotons are great for greenery, along with all the others you kindly bring. We

would also be very grateful for containers (small or large) suitable for flower arrangements.

Many thanks in advance to all who help us out. If in doubt please ask Brent Nicoll.



**Refreshments** – The canteen will be available, we will have an outside caterer coming in to supply our lunches and morning teas.

**Plant sales** – Convenor Dick Dorham will require helpers in Plant Sales. Dick would also appreciate it if anyone can bring in small boxes.

**If anyone is interested in operating the Cash Registers during the Show, please contact Plant Sales Convenor, Dick at the next meeting, and he will organise some training. It is not a difficult job, and even if you only assist for a few hours, it allows other members to have a break.**

**VERY IMPORTANT - Condition of Sale Plants**  
-I know that this topic gets repetitive, but it is very relevant and very important to ALL Orchid Growers and Societies.

Please ensure that any plants you may present for sale are **VIRUS FREE, CLEAN** and **NOT RECENTLY POTTED**. **Plants need to be stable in the pots and not show any insect damage, etc.**

This also applies to plants on the Show Bench.

Plants also need to stand upright on both the Sales and Show benches. If necessary put them inside a larger-based pot.

**It has been noted that some plants presented for Sale at recent Shows across South East Queensland (and other areas) were below the standard and quality that reputable growers find acceptable. If a plant is not of the standard that you yourself would purchase, then it should not be presented to Plant Sales**

**It also endangers other plants that are placed in the same area as “undesirable” plants, risking the spread of infection and disease.**

As per our By-Laws, -refer in particular to EDOS By-Laws 5.6 and 5.7 - such plants which are deemed to be of an unsuitable standard will be removed from the Sales Tables.

**Sales at EDOS Inc Shows are limited to Orchids and Orchid related products. Any queries relating to Sales need to be directed to the Plant Sales Convenor, Dick**

## Assistance During The Show

If you are available to help out at the Autumn Show, please put your name on **the Roster which will be at the next meeting (Roster will be at the front table)**, or contact either Show Captain Ray, Secretary Garth or President Barry and let them know when and where you would be available to help out.

*Even if you can only spare a couple of hours, we need as many members as possible to help make the show a success and give all of our workers a break and a chance to have a browse around the show! Remember, it is your Society.*



**One area we urgently need volunteers to cover is scribing on Friday night during Judging.** It is not an onerous job, the main part of the job is copying names off the plant labels of the plants that have been judged as winners, along with the correct Class, so that those in the office can print out the Place Cards. There will be someone there to assist you during the night. (Incidentally, you could always "practice" on Meeting nights during judging).

We also need volunteers in Plant Sales to assist members of the public with any questions they may have, and also for Plant Minding, and to set up **on Friday afternoon from 2.00 pm, and especially for the pack up on Sunday afternoon.** The more helpers we have the quicker it all gets done!



**Fame Orchids Nursery**  
**Peter's Glen Shade Houses**  
119 Boundary Road Thornlands Q 4164  
Shade Houses & Orchid Specialists  
Ph 3206 4385 Open 7 days  
[www.fameorchids.com](http://www.fameorchids.com)  
Est 1978

Thousands of Orchids and Growing Accessories  
Orchid Bark, Charcoal, Sphagnum Moss, Perlite  
Squat Pots, Trays, Timber Baskets, Wire Hangers  
Cork Bark, Tree Fern Mounts, Hollow Logs

[www.petersglenshadehouses.com.au](http://www.petersglenshadehouses.com.au)  
Huge range of Shade Houses, Open & Closed units  
Plants Stands, Benches, Rolled Edge Shelving  
Email [sales@fameorchids.com](mailto:sales@fameorchids.com)

## Volunteers Needed

EDOS Inc will again be holding the Wynnum Plaza promotional display on 14 March for the upcoming Autumn Show which is on 21 and 22 March, 2026. Some of our regular attendees are not available the assist on this date, so we will need some assistance from other members on the day to spare to. It is not an onerous job, helping to promote the Show and our Society, handing out flyers and answering questions but if we can get enough members to assist, it makes it easier for everyone to have regular breaks. **Please contact President Barry Kable if you are available to assist.**

We will also be looking for some plants to use in the display. We don't need your best showbench plants, but plants that will look good in a mass display.

## Vouchers for EDOS Autumn Show 2026

As part of our Member Benefits, EDOS Inc Committee are again giving each membership who attends the January or February Meetings a Voucher to be used at the Autumn Show. These vouchers will be distributed as follows:

- **You will need to be a Financial Member of EDOS Inc for 2026**
- If you weren't at the January meeting, these vouchers will be available at the February meeting. NB Even if you attend both meetings you will only receive 1 voucher.
- 1 (One) only per membership (if you have a family membership you will receive 1 voucher only)
- The voucher **MUST** be used at the EDOS Autumn Show 2026 only, at either Plant Sales or at Brisbane Orchid Supplies only, **before the close of business on Sunday.** Once the Show is finished the voucher will become null and void. These vouchers will be dated.
- Voucher must be used in full. ie **no change will be given.** You can use the voucher as part of a purchase, adding cash or card to finalise your purchase. They cannot be traded for cash.

One of our members will have the member list and the Vouchers at the next meeting, so please listen to President Kable to announce who will have this list.

If you have any questions, please ask a Committee member for clarification.

## *EDOS INC MEMBER BENEFITS*

EDOS Inc has over the past year or so, initiated a number of **Member Benefit bonuses** for our financial members to take part in.

These include subsidising Bus Trips, Field Days, Xmas in July, and the Christmas breakup. Another benefit is providing Club Shirts to members. Also available is the Show voucher (redeemable at the Show only) given to those members who attend either of the 2 meetings prior to the EDOS Shows.

In return for these Benefits, we would appreciate if members could assist wherever possible to "share the load" when Shows, meetings and other events are held. Remember, it is everyone's Society, and it is great to "Share the Load" and let everyone enjoy these events.

**Another benefit is being able to purchase plants from Plant Sales on the Friday night prior to our Show, however this one comes with some "strings attached".**

This Benefit is open to financial members who either:  
Assist in setting up and dismantling the venue, or  
Bench plants at the show, or  
Bench and sell plants at the show, or  
Volunteer their time at the show.

If a member doesn't regularly do any of the above then it is not fair that they be given the advantage of the benefit, as they are "not doing anything to assist the Society", and may be declined when attempting to gain the advantage of being able to purchase any plants before everyone else.

(PS the Show Roster will be available at the 2 meetings prior to the Shows, to enable members to address some of the above)



## **EDOS Inc 60<sup>th</sup> Anniversary Celebrations**

2026 EDOS Inc marks the 60<sup>th</sup> Anniversary of Eastern District Orchid Society Inc.

The Committee is planning a Luncheon on 13 June 2026 at the Wynnum Manly Leagues Club. All members will be presented with a commemorative plant on the day to help us celebrate.

***If anyone has any memorabilia or any ideas they would like to share, please contact one of our Committee members.***

### *Brisbane Orchid Supplies* *For all your Orchid Accessory Needs*

Pots, Orchid Mixes, Labels, Clips, Hangers,  
Fertilisers and lots more.

Suppliers of Orchid Bark

#### **Contact**

*Paul and Leanne McCarthy*

Phone 0435 959 297

Email: [sales@brisbaneorchidsupplies.com](mailto:sales@brisbaneorchidsupplies.com)

## *SOMETHING DIFFERENT IN JULY*

At the July General Meeting, for something different we will be holding an "Inhouse Mini Show". (EDOS Inc Members Only will be eligible). There will be 10 Classes, with prize money of \$25, \$15 and \$10, with an Overall Champion of \$50. This plant will be the July entry into the Jack Feige Memorial Trophy Competition.

More information closer to the time.

#### **GENERAL NOTICE**

Members who wish to record change of address or other membership particulars – please advise the Secretary - email [secretary@edos.org.au](mailto:secretary@edos.org.au) or phone 0410318587. **Disclaimer:** While the Management Committee and the Editor of the EDOS Inc Newsletter endeavour to assure the reliability of material and advertising printed in the Newsletter, neither EDOS Inc or the Editor can assume any responsibility for the views expressed in the Newsletter. Editors of other Newsletters are advised that EDOS Inc will be happy if they decide to use material printed herein, on condition of acknowledgement of where the information was obtained.

#### **NOTE FROM THE EDITOR**

**For anyone who is interested in receiving their Newsletter and any other information from EDOS electronically, please let me know your email address and I will include you in our email group. You will receive your Newsletter in a much faster timeframe, and not miss out on anything else that is often sent out in between Newsletters. My email address is [editor@edos.org.au](mailto:editor@edos.org.au)**

